



Dr. Beyers Naudé
MUNICIPALITY | MUNISIPALITEIT | UMASIPALA
rising together for development

A **NATION** 
THAT **WORKS** FOR ALL



VOL. 1 ISSUE 4 · SEPT 2025

Building a Sustainable and Empowered Future Together

Official Newsletter: Dr Beyers Naude Local Municipality

This issue:

- Mayor's Foreword
- Emergency Contacts

"Bidding Farewell to a True Gem of Our Team!"



A safe, sustainable environment for all to live and strive in.

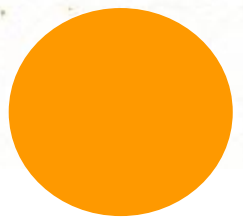
EMBRACE DIVERSITY



Celebrating

**HERITAGE
MONTH**

24 SEPTEMBER 2024





Cllr Willem Safers
Mayor,



Mayor's Forward

I am honored to present this Latest edition of our municipal newsletter, which captures the ongoing spirit of resilience, collaboration, and sustainable development within our communities.

This month has been marked by activities that reflect our shared vision of building a municipality that values both people and the environment. Through the Land Care Awareness Campaign, held in partnership with the Department of Agriculture, our municipality joined efforts to promote sustainable land management and responsible environmental practices.

This initiative reminded us that caring for our land is a shared responsibility — one that safeguards our natural resources for generations to come. Equally inspiring was the Dr Beyers Naudé Career Expo, which provided our youth with access to opportunities, information, and resources to shape brighter futures. We remain committed to empowering young people, ensuring they are equipped with the knowledge and tools needed to thrive in an evolving economy.

In addition, I am pleased to highlight the progress of key infrastructure projects, including the Nieu Bethesda Housing Project, which continues to advance ahead of schedule. Such projects not only bring much-needed services and housing but also create jobs and stimulate local economic activity.

Our achievements, such as the municipality's outstanding performance in the 2025/2026 IDP Annual Assessment, reaffirm our dedication to good governance, accountability, and inclusive development.

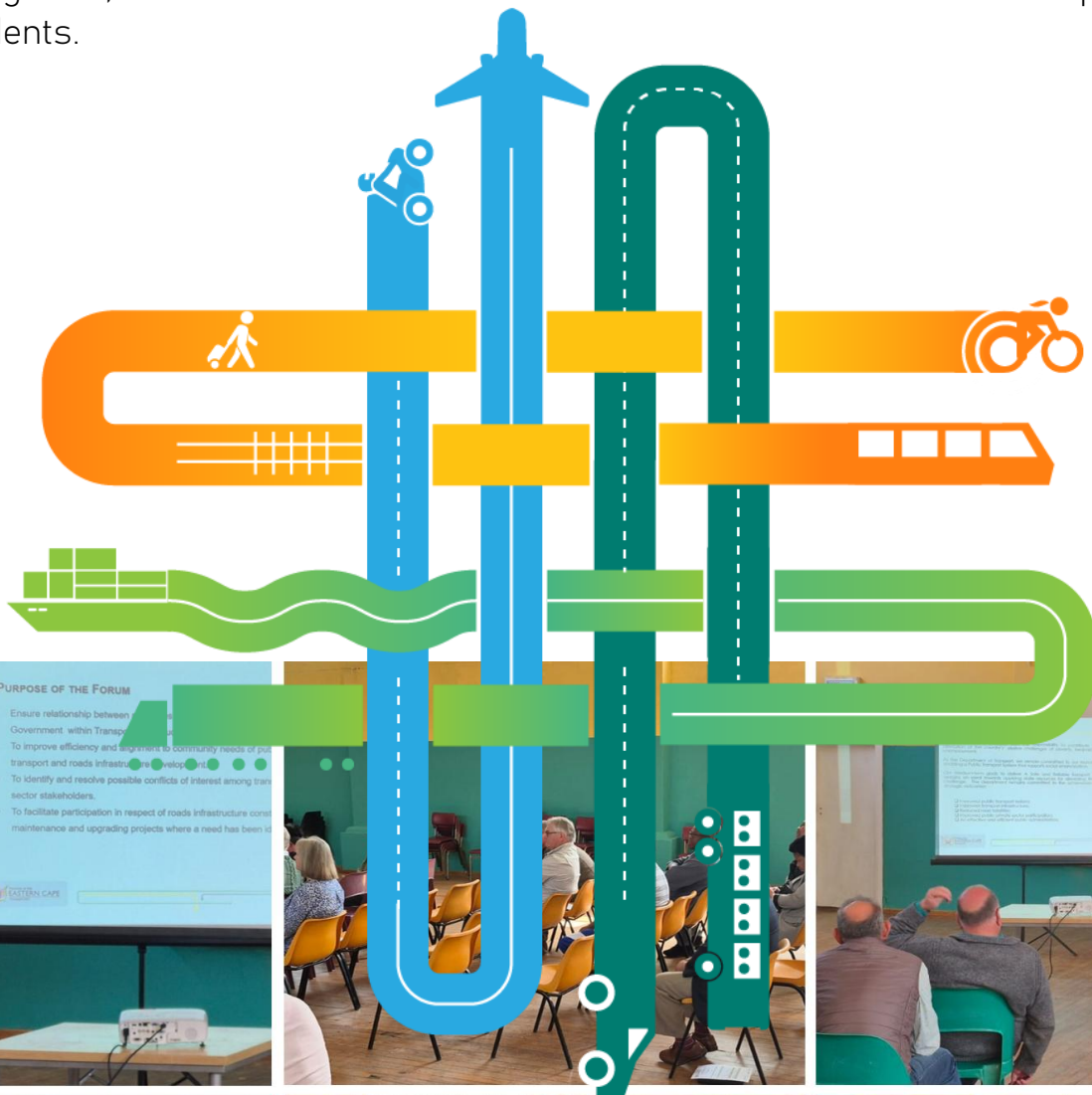
As we move forward, let us continue working together — communities, partners, and leadership — to build a municipality rooted in sustainability, empowerment, and opportunity for all.

Thank you for your continued support and commitment to our shared vision of a resilient and prosperous Dr Beyers Naudé Local Municipality.

Together, we are building a municipality rooted in empowerment, respect, and opportunity for all. Thank you for your continued partnership as we advance toward a resilient and inclusive future.

Dr Beyers Naudé Local Municipality Successfully Establishes Transport Forum – 11th Sept 2025

The Dr Beyers Naudé Local Municipality is proud to announce the successful establishment of its Local Transport Forum in accordance with the Transport Forum Policy (2025). The forum brings together key stakeholders from various transport sectors, community organizations, and government representatives to promote integrated, safe, and sustainable transport planning across the municipality. The establishment of the forum marks a significant milestone in strengthening collaboration and improving coordination in transport-related matters. It will serve as a platform for dialogue, planning, and decision-making on issues affecting public transport, infrastructure development, and mobility within the municipal area. The municipality extends its appreciation to all organizations that submitted nominations and participated in the launch process. Together, we move towards a more connected and accessible transport system for all residents.



PRESENTATION 3

Annual IDP Assessment Review 2025/26 FY

Feedback

Dr Beyers Naudé Local Municipality Shines in Municipal IDP Assessment The Dr Beyers Naudé Local Municipality is proud to announce its remarkable achievement in the Municipal IDP Annual Assessment for the 2025/2026 financial year. Scoring an impressive overall rating of 86.69%, the municipality emerged as one of the top-performing municipalities in the Sarah Baartman District. This outstanding performance reflects the municipality's commitment to excellence in Integrated Development Planning (IDP), ensuring that community priorities are effectively aligned with sustainable development goals and service delivery outcomes. Key highlights from the assessment include:

- ✓ High performance across all Key Performance Areas (KPA's), with exceptional scores in areas such as Local Economic Development, Governance, and Financial Viability.
- ✓ Strong collaborative planning between municipal departments, stakeholders, and communities.
- ✓ A clear demonstration of strategic leadership and accountability in driving the IDP process.

Municipal Manager and the IDP team have expressed gratitude to all officials, councillors, and community members who contributed to this success." This achievement demonstrates our shared vision for development and our unwavering commitment to serving our communities with integrity, innovation, and impact. "The municipality remains dedicated to continuous improvement and ensuring that the 2025/2026 IDP remains a living document that drives inclusive growth and sustainable service delivery.

Congratulations to the entire Dr Beyers Naudé team for this remarkable accomplishment! Together, we continue to build a municipality that works for all



Dr. Beyers Naudé
MUNICIPALITY | MUNISIPALITEIT | UMASIPALA
rising together for development

2025/26 **IDP** **WARD BASED PLANNING**

PUBLIC PARTICIPATION PROGRAMME

SCHEDULE

Community Based Planning - Ward Structures

DATE	WARD	TOWN	VENUE	TIME
Monday, 9 October 2025	7	Graaff Reinet	Assemblies Of God	16H00
Monday, 13 October 2025	12	Steytlerville	Town Hall	17H00
Wednesday, 15 October 2025	11	Jansenville	Municipal Boardroom	11H00
Thursday, 16 October 2025	1	Aberdeen	Municipal Boardroom	11H00
Thursday, 16 October 2025	4	Kroonvale	Alex Laing	17H00
Wednesday, 22 October 2025	10	Klipplaart	Town Hall	10H00



INTEGRATED DEVELOPMENT PLANNING

<https://bnlm.gov.za/>

049 807 5700

FACEBOOK



WhatsApp



Dr Beyers Naudé Career Expo Empowers Youth with Opportunities



Dr Beyers Naudé Career Expo Empowers Youth with Opportunities. Date: 25–26 September 2025 Venue: Botanical Gardens, Graaff-Reinet Hosted by: Dr Beyers Naudé Local Municipality – Special Programs Unit (SPU) In Partnership With: Department of Labour, Department of Education, State Departments, SETAs, Universities, TVET Colleges, Financial Institutions, and NGOs Opening Doors to a Brighter Future. The Dr Beyers Naudé Local Municipality, through its Special Programs Unit (SPU), successfully hosted the 2025 Career Expo at the Botanical Gardens in Graaff-Reinet.

The two-day event, held on 25 and 26 September, brought together a wide range of stakeholders with a shared mission: to empower the youth with knowledge, resources, and opportunities for their future careers. The Career Expo was officially opened by SAPS Station Commander Colonel AJ Arends, who delivered a powerful message encouraging learners to make informed decisions about their futures and to seize the opportunities presented to them. A Hub of Information and Inspiration.





Youth who are no longer in school were also encouraged to attend, with a focus on alternative pathways such as skills development and further education. Support for Tertiary Education. A key highlight of the expo was the support offered for NSFAS bursary applications for the 2026 academic year

SPU Officer Lucricia Jackson played a pivotal role in guiding learners through the application process, ensuring that no student is left behind due to a lack of information or access. She reminded learners that the NSFAS application deadline is 15 November 2025, and encouraged them to visit her office for assistance. Building a Skilled and Empowered Youth The Career Expo served as a vital platform for bridging the gap between education and employment. Public Employment Services were also present to assist young people in identifying job opportunities and connecting them with potential employers or training institutions.

A Community United for Youth Development The success of the Career Expo reflects the municipality's commitment to youth empowerment and development. Through collaboration with various stakeholders, the Dr Beyers Naudé Local Municipality continues to foster a future where young people are equipped with the tools and knowledge to thrive.



LAND CARE AWARENESS CAMPAIGN



On the second of October 2025, the Alex Laign Community Hall in Graaff-Reinet became a hub of environmental dialogue and learning, hosting the Landcare Awareness Campaign. This pivotal event, hosted by the Eastern Cape Department of Agriculture in partnership with the Dr Beyers Naudé Local Municipality, was convened with a clear and vital purpose: to champion sustainable land management by informing farmers and land users about the Land Care Programme. The campaign's core mission was to educate communities on responsible land-use practices, emphasizing that the conservation of our natural environment is a critical duty for both the present and future generations. It sought to foster a culture of custodianship, where every land user recognizes their active role in protecting natural resources and promoting sustainable agriculture.



LAND CARE AWARENESS CAMPAIGN

02 OCTOBER 2025 – ALEX LAING GRAAFF REINET



agriculture
Department:
Agriculture
PROVINCE OF THE EASTERN CAPE

Under the skillful direction of Mr. A. Nyambali, the programme featured a comprehensive series of expert presentations designed to address the multifaceted challenges of land management. The discussions provided a thorough grounding in the subject, beginning with an overview of land degradation by Mr. M. Tuswa. This was followed by a detailed explanation of the LandCare Programme itself by Mr. M.R. Maloma. The legislative framework supporting these efforts was thoroughly explored, with experts presenting on key acts including the Conservation of Agricultural Resources Act (CARA), the Forestry Act, and the National Environmental Management Act (NEMA). Further enriching the discourse, topics such as forestry development for livelihoods and strategies for disaster risk reduction were also presented, offering a holistic view of environmental stewardship. The collaborative spirit of the event was underscored by a word of support from the municipality, delivered by Ms. N. Kubashe, acknowledging the Department of Agriculture's role in fostering community partnerships.

The Land Care Awareness Campaign successfully reinforced the powerful message that caring for the land is a shared responsibility. The event, which concluded with a vote of thanks from Mr. L. Barends, served as a potent reminder that through strategic partnerships, continuous education, and the widespread adoption of sustainable practices, communities can unite to protect their natural heritage. The campaign ultimately laid a foundation for building a greener, more resilient, and environmentally conscious future for the Eastern Cape and beyond.

**THE DEPARTMENT WILL BE AWARDING CERTIFICATES TO THE TRAINEES ON
THE 17 OCTOBER 2025 AT 09H00. RIETBRON SEWING BENEFICIARIES**

HOUSING DELIVERY PROGRESS REPORT (Q1 2024/25) – BY TOWN PLANNING

PROJECT / PROGRAMME	PROGRESS STATUS	KEY NEXT STEPS / ACTIONS	RESPONSIBLE PARTY
1. Steytlerville Housing	58 units completed. Awaiting Electrical COCs for all units.	Obtain and submit remaining Electrical Certificates of Compliance (COCs).	Contractor / Municipal Elec. Unit
2. Nieu Bethesda (79 Units)	Planning approved. Consultant tender closing Oct 2024.	Handover site to Consultant & Contractor.	Dept of Human Settlements (DoHS)
3. Umasizakhe 242	Contractor appointed for final 13 units.	Complete construction of 13 remaining units to close the project.	Contractor
Title Deeds Restoration	1,100+ title deeds are ready across all wards.	Schedule a handover programme for beneficiaries.	Housing Office / Municipal Manager
Informal Settlements Upgrade (Vrygrond & Reimvasmaak)	Tender at adjudication stage.	Appoint service provider and introduce to communities.	Municipality
Multipurpose Centre (MPCC) - Ward 7	Tender adjudicated.	Appoint contractor and commence construction.	Municipality (Implementing Agent)
New Housing Applications	Jansenville (50), Umasizakhe (87): Submitted to DoHS, awaiting outcome. Nieu Bethesda (66): Submitted, awaiting approval. Graaff-Reinet (800) & Aberdeen (200): Outstanding documentation (land ownership, bulk services confirmation, plans).	Urgently provide outstanding documentation to DoHS to unlock funding.	Dr Beyers Naude LM
Key Challenge	Severe lack of internal capacity. Housing Administrator seconded to Willowmore, crippling beneficiary admin and reporting.	Address the staffing vacuum urgently to prevent further delays.	Municipal Management

UPDATE ON PROJECTS

Project Name	Ward/Area	Project Type	Start Date	Expected Completion
7de Laan Paving - Umasizakhe	Ward 6	Roads & Stormwater	01-Aug-25	Mar-26
Upgrading of Collie Koeberg Phase 2	Ward 7	Community Facilities	TBC	Jun-26
Dr. Beyers Naude: Municipal Road Network Upgrading	Ward 3,4,6,7	Roads & Stormwater	01-Jul-25	Sept-26
Upgrading And Refurbishment Of Bridges And Culverts In Dr. Beyers Naude			TBC	Jun-27
Raw Water Reservoir	Ward 2	Water Supply	01-Jul-25	Jun-26
MDRG 2	Ward 11	Roads & Stormwater	01-Mar-25	Nov-26
MDRG 3	Ward 11	Roads & Stormwater	TBC	Jun-26
June Flooding	Ward 8,9	Roads & Stormwater	01-Aug-25	15-Jan-26



Nieu Bethesda Housing Project Update

The Nieu Bethesda Housing Project has officially commenced and is showing encouraging progress in its early stages. According to the contractor's progress report dated 29 August 2025, the project has already reached 8% overall completion, which places it 4% ahead of the planned schedule. This strong start is reflected in several key achievements on site, including the successful handover of the site, near-completion of site establishment at 90%, and significant progress in Section 1 of the Civil Engineering Services, which currently stands at 43% complete.

In addition, specific tasks such as sewer excavations, pipe laying, and backfilling are each 90% complete, further demonstrating the project's steady momentum. Employment creation remains a central focus of the project. At present, there are 16 people employed on site, with half of these being local laborers, including young people from the community. While no persons with disabilities have been appointed yet, the project has already provided important opportunities for local participation.

An initial challenge relating to Expanded Public Works Programme (EPWP) labor rates was resolved after successful negotiations, which resulted in rates being adjusted slightly above the minimum daily wage. This ensures fairer compensation for the workforce while keeping the project on track. Health and safety practices have been fully implemented on site. All inductions, toolbox talks, and safety checklists are up to date, and importantly, there have been no incidents reported since the start of the project. This reflects the contractor's commitment to creating a safe and responsible working environment. Despite the positive progress, the project has also encountered minor challenges. Two trees currently obstruct the planned alignment for water and sewer lines, and the contractor is awaiting further instruction from the engineer on how best to proceed. These types of site-specific challenges are expected in construction projects and are being managed without disruption to the broader schedule.

Looking ahead, the project team will focus on completing the outstanding sewer line work, building sewer manholes, and finalizing the water reticulation system. Preparations will also begin for the construction of the first 10 housing units, marking an important milestone for the community. The Dr Beyers Naudé Local Municipality remains committed to ensuring that the Nieu Bethesda Housing Project continues to progress on schedule, delivers quality infrastructure, and maximizes opportunities for local participation. With a strong foundation already established, the project is well-positioned to bring meaningful change to the lives of residents in the months ahead.



Heartfelt & Appreciative

"Goodbyes are hard, but the memories and impact you leave behind will stay forever."



MM OFFICE PRESENTS

FUN-DAY

CANCER AWARENESS FUNDRAISING



POTJIEKOS COMPETITION





Stay Connected with DBNLM!

Want to be the first to know about community updates, events, service notices, and opportunities?



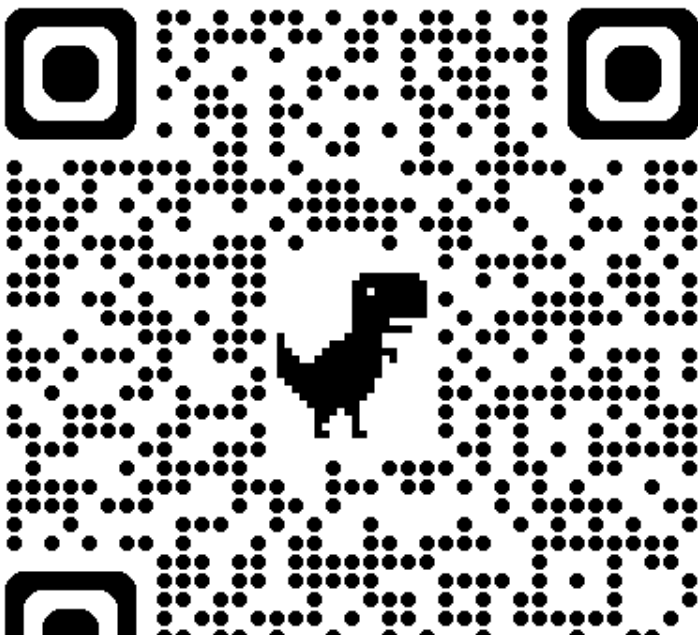
Join our WhatsApp Channel for instant updates straight to your phone.



Follow our Facebook Page for news, photos, videos, and community engagement.



Scan QR to follow:



Emergency Contacts Details:



Graaff-Reinet Area	
Graaff-Reinet Switchboard	049-807 5700
Graaff-Reinet Municipal Manager's Office	049-807 5701
Graaff-Reinet Robert Sobukwe Building	049-807 5702
Graaff-Reinet Call Centre	049-807 5710
Graaff-Reinet Traffic Department	049-807 5711
Protection Services Standby	061 646 3361
Fire Services Standby	060 425 0113 / 084 256 1536
ESKOM Consumers	086 003 7566
Satellite Offices	
Aberdeen Main Office	049-807 5703
Aberdeen Service Area (Electricity) – standby	082 822 8957
Aberdeen Service Area (Water) – standby	063 371 8590
Nieu-Bethesda Office	049-807 5714
Nieu-Bethesda Service Area (after hours)	082 734 8392

Jansenville/Klipplaat Service Area Standby	079 557 8228
Willowmore Main Office	049-807 5704
Willowmore Tourism Office	049-807 5709
Willowmore Traffic Department	049-807 5712
Willowmore emergency (standby) line	049-807 5713
Willowmore Service Area Standby	079 1234 176/076 940 2442
Rietbron Main Office	049-807 5705
Rietbron Services Area Standby	079 021 5746
Steytlerville Main Office	049-807 5706
Steytlerville Service Area (Water & Sanitation) Standby	069 117 3911
Steytlerville Service Area (Electricity) Standby	081 333 0135